



WIDENING PARTICIPATION CONFERENCE FOR MEDICAL STUDENTS 2019

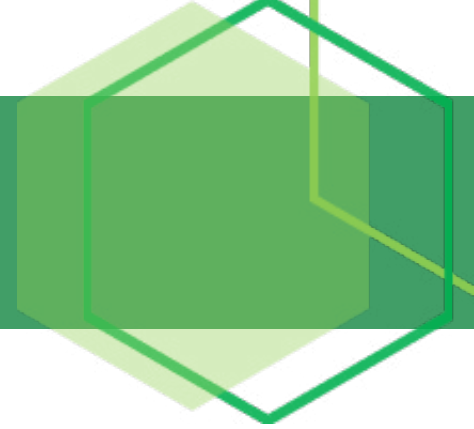
DELEGATE HANDBOOK

Friday 22 November 2019
Ambassadors Bloomsbury Hotel, London



msc Medical
Schools
Council
For the future of medicine

CONTENTS



WELCOME	3
THE NATIONAL MEDICAL SCHOOLS' WIDENING PARTICIPATION FORUM	4
CONTACT US	5
PROGRAMME	6
MEET THE SPEAKERS AND ORGANISERS	7
SYNOPSSES OF WORKSHOPS	15



msc Medical
Schools
Council
For the future of medicine

WELCOME

After the success of our first conference, the Medical Schools Council and National Medical Schools' Widening Participation Forum would like to invite you to the 2nd Annual Medical Student Conference on Widening Participation (WP). This will be a unique opportunity to enhance the invaluable work that you are doing at your medical school as well as a chance to network with colleagues who share the same vision. All workshops have been designed and will be delivered by medical students across the UK, and we also have a special workshop from the Brilliant Club.

AIMS

By the end of the conference, delegates will be able to:

1. Understand the importance of WP in medicine
2. Identify key features of the hidden curriculum in WP programmes
3. Have strategies in place to create a WAMS society
4. Effectively evaluate their WP activities
5. Overcome barriers to the work
6. Design workshops targeting younger pupils in schools
7. Address challenges faced locally with the work

ORGANISING COMMITTEE

We would like to thank the Medical Schools Council, particularly Rachel Chall and Clare Owen, for their help and support with the design and delivery of the conference.

Best wishes

The Organising Committee (from seven medical schools in UK)

Enam Haque	University of Manchester	Emily Reid	University of Warwick
Louise Alldridge	University of Plymouth	Kirsty Morrison	University of Birmingham
Helen Franklin	University of Manchester	Holly Morley	BSMS
Hannah Delmas	University of Plymouth	Ben Ryan	FY2, North West Deanery
Jo Lai	University of Birmingham		
Rob Cartwright-Speakman	University of Manchester	Gabriela Kopernicka	University of Plymouth
Sylva Adeeko	University of Warwick	Annabel Heybourne	Hull-York Medical School
		Mandy Hampshire	University of Nottingham

THE NATIONAL MEDICAL SCHOOLS' WIDENING PARTICIPATION FORUM

The National Forum was created in 2015, with the purpose of increasing the proportion of medical students from Widening Participation backgrounds who gain entry to a member medical school and successfully completing the course. In order to fulfil this aim, member institutes have agreed to:

- Share good practice on outreach and evaluation
- Share anonymised Widening Participation data (according to appropriate data sharing guidelines)
- Regularly update on activities
- Develop new beneficial practices
- Participate in research
- Liaise with the Medical Schools' Council and work collaboratively
- Develop public engagement strategies

MEMBER INSTITUTIONS

- General Medical Council
- UCAT
- Royal College of General Practitioners
- Royal College of Surgeons
- University of Manchester
- University of Liverpool
- Lancaster University
- Hull-York Medical School
- Keele University
- University of Birmingham
- Aston University
- University of Glasgow
- University of Plymouth
- Brighton and Sussex Medical School
- Imperial College, London
- King's College, London
- University College, London
- St George's, University of London
- Queen Mary's, University of London
- University of Nottingham
- University of Leicester
- University of Newcastle
- University of Southampton
- University of Warwick
- Edge Hill University
- Anglia Ruskin University
- University of Lincoln

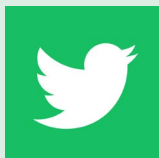
CONTACT US

Please contact our National Forum Secretary, Helen Franklin, if you would like your institute to be involved in the work.

We also have a student working group that you are welcome to join
Helen.franklin@manchester.ac.uk



Follow us on twitter



@NMS_WP_Forum



PROGRAMME

10.00	Registration and Networking	
10.30	Welcome and “Why the Work is Important” Dr Enam Haque Research Presentation, Hidden Curriculum Megan Harrison	
11.00	Parallel Session 1A: Establishing a WAMS society Facilitator: Hannah Delmas	Parallel Session 1B Evaluating Impact Facilitators: The Brilliant Club
11.50	Poster presentation 1	
12.00	Break	
12.15	Session 2: Overcoming Barriers to WP Work Facilitators: Jo Lai, Kirsty Morrison	
13.05	Poster Presentation 2	
13.15	Lunch	
14.15	Session 3: Engaging Younger Pupils Facilitators: Rob Cartwright-Speakman, Ben Ryan	
15.05	Poster Presentation 3	
15.15	Break	
15.30	Parallel Session 4A: Addressing the Challenges of your Region Facilitators: Hannah Delmas, Holly Morley, Gabriela Kopernicka	Parallel Session 4B: How to Approach Research in WP Facilitators: Sylva Adeeko, Mohammed Sahir
16.20	Poster Presentations Voting, Panel Discussion and Close Facilitator: Dr Enam Haque	
16.45	Close	

MEET THE ORGANISERS & SPEAKERS

DR ENAM HAQUE

Chair, National Medical Schools' Widening Participation Forum, Clinical Senior Lecturer, University of Manchester

Enam is a GP Partner in Manchester, and also Clinical Senior Lecturer at the University of Manchester. He is Academic Lead for GP Placements and Lead for Widening Participation. He is the Founder and Chair of the National Medical Schools' Widening Participation Forum. Enam was born in Bangladesh and grew up in Yorkshire. The son of a restaurant owner, he is proud of his heritage and is passionate about helping others to follow in his footsteps into a career in medicine.



DR LOUISE ALLDRIDGE

Associate Professor. Academic Lead Cell and Molecular Biology, Widening Participation Lead, Peninsula School of Medicine

Louise has maintained an active interest in Widening Participation, including research and evaluation at the University of Cambridge exploring the habitus of Medical and Veterinary students. Louise also designed and implemented strategies to widen the participation of Aboriginal and Torres Strait Islander people in Australia, and a longitudinal, holistic Widening Participation Strategy at Peninsula Medical School. This aims to encourage and support Widening Participation from primary school to practice. As part of this strategy, Louise has planned a Foundation Year for Medicine at Peninsula Medical School that began this academic year.



MEET THE ORGANISERS & SPEAKERS

HELEN FRANKLIN

Secretary, National medical Schools' Widening Participation Forum, Widening Participation & Student Experience Manager, Manchester Medical School

Helen works closely with Enam to support the delivery of a range of widening participation activities from Primary School to Year 13. She feels privileged to see pupils that have been part of these activities then progress to Medical School and in turn give their time to help at Widening Participation events.



HANNAH DELMAS

Student Lead, National Medical Schools' Widening Participation Forum, 5th Year Medical Student, University of Plymouth

Hannah is a final year medical student at Plymouth University Medical School. She has worked within WP across the 5 years and has been the Co-president for the group for the past two years. Plymouth WAMS society is very comprehensive and successful with running over 290 events last year and holding their first WP conference with over 60 delegates from across the UK attending. She is also this year's NMS Widening Participation Forum Student Lead.



MEET THE ORGANISERS & SPEAKERS

DR RACHEL CHALL

Senior Policy Officer, Medical Schools Council

Rachel is a Senior Policy Officer at the Medical Schools Council and is based at Woburn House, London. Rachel supports the MSC Selection Alliance on matters such as selection, outreach, and widening participation. She also provides secretariat support to the Education Leads group. Rachel has a MB BCh BAO (Medicine) from University College Dublin and a Graduate Diploma in Law from BPP.



EMILY ROISIN REID

Senior Careers Consultant & Lead for Widening Participation, Warwick Medical School

Emily is passionate about Widening Participation, Social Justice, and equalising Differential Attainment in Medicine. She is a qualified Career Guidance Practitioner, trained in High Performance Coaching, with a former background in HR & Business Management. Her research interests are in Widening Participation in Medicine, Medical Careers, Medical Education, Career Decision-Making and Theory, Career and Vocational Counselling.



MEET THE ORGANISERS & SPEAKERS

JO LAI

4th Year Medical Student, University of Birmingham

Jo is originally from a small town in Herefordshire, next to Wales, she participated in the University of Birmingham's widening participation schemes in Year 12 and 12. This provided her with a huge amount of support, especially as she was the first in her family to pursue a medical career. As a student, she has been actively involved in outreach activities, and was previously President of the widening access student society.

" I got involved in WP because I want to raise aspirations in young people and ensure that everyone has the opportunity to enter medical professions regardless of their backgrounds."



SYLVA ADEEKO

4th Year Medical Student, University of Warwick

Sylva is a 4th year finalist at Warwick Medical School. She has been involved in WP across all 4 years, beginning by volunteering for the Horizons outreach project and being on the committee for 2 years. The project introduces healthcare careers to school-age pupils, within a hospital environment. She founded her university's WHAM (widening participation in health and medicine) society, now being the president for its second year. Sylva has completed multiple WP research projects.



MEET THE ORGANISERS & SPEAKERS

ROB CARTWRIGHT-SPEAKMAN

4th Year Medical Student, University of Manchester

Rob is originally from Wigan, 1 of the 4 cold spots for WP in Greater Manchester. He has been involved with WP efforts for over 2 years now, going to sixth forms and high schools in the Wigan borough. He has also written a paper on WP and why we need to implement it to younger students.

"I got into WP because I realise how lucky I am to be in the position I am in; to go back to Wigan and to show students that they are capable of becoming doctors is something I am very proud to be a part of."



KIRSTY MORRISON

4th Year Medical Student, University of Birmingham

Kirsty is a 4th year medical student at the University of Birmingham. She is currently President of Birmingham Widening Access to Medical Sciences and is intercalating in Healthcare Management and Leadership.

"For me, the importance of widening access is achieving an NHS which represents the community it serves."



MEET THE ORGANISERS & SPEAKERS

DR MANDY HAMPSHIRE

Director of Undergraduate Medicine Admissions University of Nottingham and School of Medicine Widening Participation Champion for Derbyshire, GP and Clinical Associate Professor in Primary Care



Mandy was the first student from her state secondary school to study Medicine and the first member of her family to go to University. Since becoming Director of Admissions at Nottingham University Medical School, she has worked continually with the Nottingham WAMS medical students to encourage and inform local school students to apply to study Medicine and contributes to the Nottingham University Summer School Programme helping participants in their journey to study Medicine.

DR BEN RYAN

FY2, Lancashire Teaching Hospitals NHS Trust

Ben is a junior doctor in Lancashire. He was a medical student at Manchester Medical School, and three years ago, set up a widening participation society called Manchester Outreach Medics. He has the great pleasure of working with some fantastic volunteers, and is pleased to see the society is still going strong today.



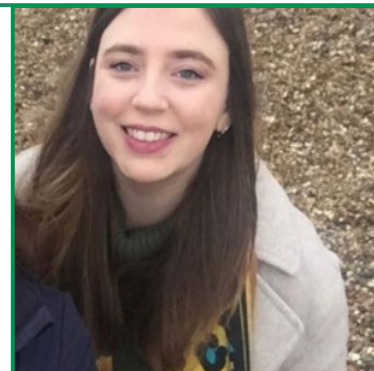
"I got involved in widening participation to help ensure that young people from disadvantaged backgrounds have the support they need to reach their full potential, but also to work with my local community and schools."

MEET THE ORGANISERS & SPEAKERS

ANNABEL HEYBOURNE

Deputy Student Lead, NMS Widening Participation Forum
3rd Year Medical Student, Hull-York Medical School

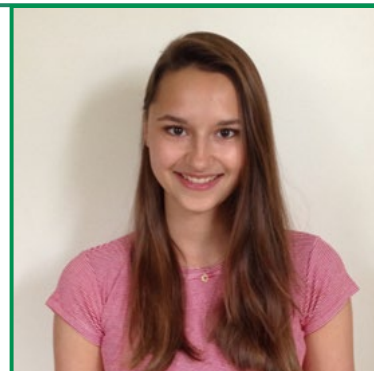
Annabel is a third year medical student at HYMS. She got involved with WP and outreach activities when she became a student ambassador on joining medical school. After attending this conference last year, she was enthusiastic to become involved with the student working group and is currently attempting to set up a HYMS WP society.



GABRIELA KOPERNICKA

5th Year Medical Student, University of Plymouth

Gabriela is a 5th year medical student at Plymouth University and helps run Plymouth WAMS as the co-president along with Hannah. She has been involved with WAMS across the 5 years and seen the society develop more and more every year. Having studied at 5 different schools across 4 countries, with varying levels of support, she really appreciates the aims of WAMS, helping reduce inequalities in the ways in which students are encouraged and supported to pursue a medical career.



MEET THE ORGANISERS & SPEAKERS

MEGAN HARRISON

4th year Medical Student at Brighton and Sussex Medical School

Megan is a 4th year student at Brighton and Sussex Medical School. She has been heavily involved with widening participation through the medical school's WA and outreach programmes as well as the admissions process during her time there. Through undertaking an intercalated masters in Medical Education at BSMS, she was drawn to seek further WP teaching opportunities, and carried out research into the 'hidden curriculum' of widening access to medicine.



CLARE OWEN

Assistant Director, Medical Schools Council

Clare is an Assistant Director at the Medical Schools Council, and is based in Woburn House. Her particular focus is on selection and widening participation and she led the Selecting for Excellent project which concluded with a final report which was launched in December 2015.

Clare also does extensive work on student fitness to practice and student support and has recently been involved in the review of the joint GMC and MSC guidance on professional behaviour and good medical practice for medical students. Prior to starting at the MSC in 2013 Clare worked as an Education Policy Manager at the GMC where she led on the development of the joint GMC and MSC guidance on supporting students with mental health conditions. During her time at the GMC Clare worked on numerous policy projects including the review of Tomorrow's Doctors 2009 and the review of the routes to GP and specialist registration.



SYNOPSSES OF WORKSHOPS

PARALLEL SESSION 1A: ESTABLISHING A WAMS SOCIETY

Facilitators: Hannah Delmas



PARALLEL SESSION 1B: EVALUATING IMPACT

Facilitators: The Brilliant Club



SESSION 2: OVERCOMING BARRIERS TO WP WORK

Facilitators: Jo Lai, Kirsty Morrison



SESSION 3: ENGAGING YOUNGER PUPILS

Facilitators: Rob Cartwright-Speakman, Ben Ryan



PARALLEL SESSION 4A: ADDRESSING THE CHALLENGES OF YOUR REGION

Facilitators: Hannah Delmas, Holly Morley, Gabriela Kopernicka



PARALLEL SESSION 4B: HOW TO APPROACH RESEARCH IN WP

Facilitators: Sylva Adeeko, Mohammed Sahir





msc Medical
Schools
Council
For the future of medicine


Widening
Participation
Forum

